



37 Richmond Road, Handsworth, Sheffield, S13 8TB



37 Richmond Road Handsworth

Guide Price

£130,000

GUIDE PRICE: £130,000-£140,000

A three-bedroom mid-terrace property offering excellent potential for renovation and improvement, situated in the popular residential area of Handsworth, Sheffield.

The property benefits from an attractive frontage and is arranged over three floors. To the ground floor, there is a living room and a spacious kitchen/diner with access to the rear garden, together with access to a useful cellar providing additional storage space.

To the first floor are two good-sized double bedrooms and a bathroom, while the second floor comprises a further attic bedroom.

Externally, the property enjoys a generous rear garden, offering ample outdoor space and scope for landscaping.

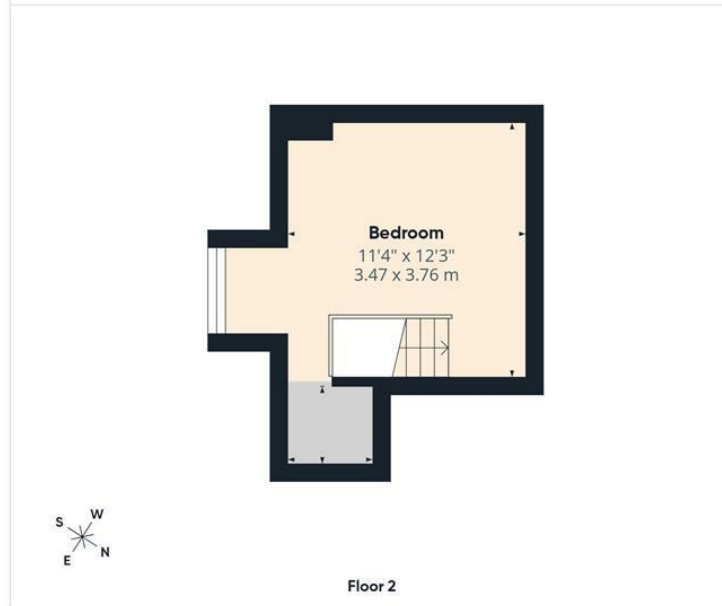
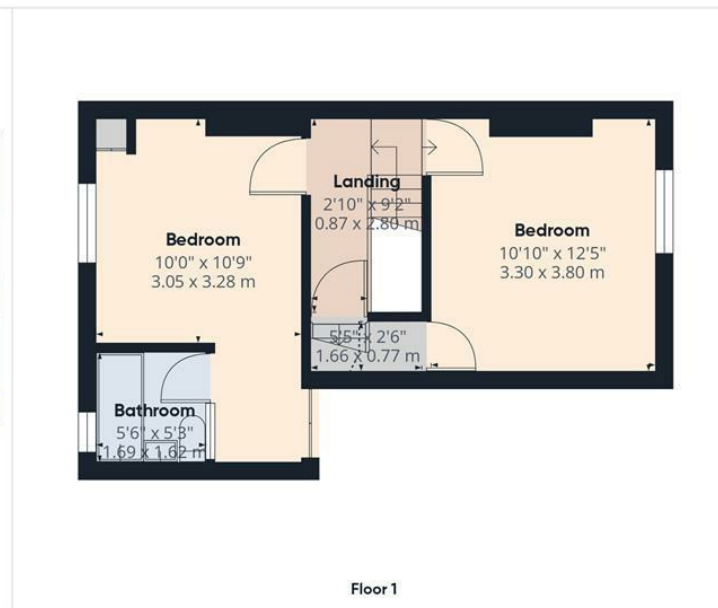
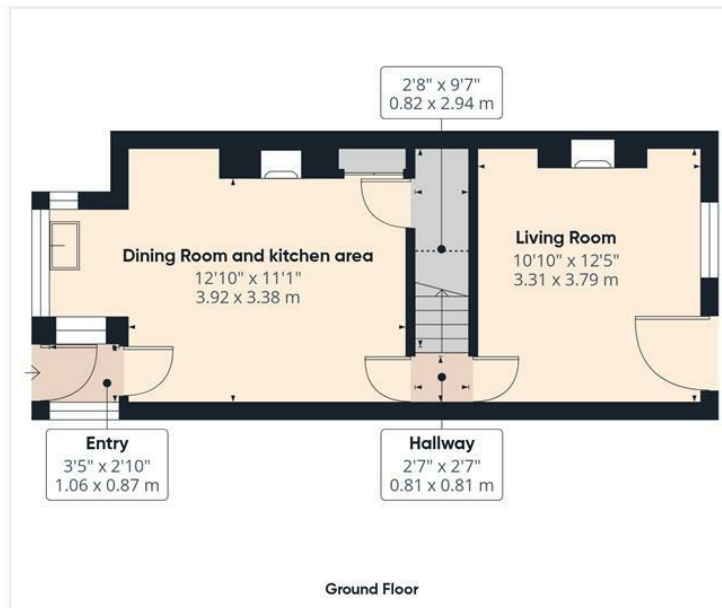
Requiring full refurbishment throughout, this property presents an ideal opportunity for investors, developers, or buyers looking to create a home to their own specification. Conveniently located close to local amenities, schools, transport links, and easy access to Sheffield city centre.



- Three-bedroom mid-terrace property
- No Chain
- In need of full renovation and refurbishment throughout
- Ground floor accommodation comprising a living room and kitchen/diner.
- Useful cellar providing additional storage space
- First floor with two double bedrooms and a bathroom
- Second floor attic bedroom offering additional living accommodation
- Good-sized rear garden with excellent potential for landscaping and outdoor enjoyment







Approximate total area⁽¹⁾
849 ft ²
78.8 m ²
Reduced headroom
18 ft ²
1.6 m ²

(1) Excluding balconies and terraces

Reduced headroom
 Below 5 ft/1.5 m

Calculations reference the RICS IPMS 3C standard. Measurements are approximate and not to scale. This floor plan is intended for illustration only.

GIRAFFE360

While we endeavour to make our sales particulars fair, accurate and reliable, they are only a general guide to the property and, accordingly, if there is any point, which is of particular importance to you, please contact the relevant office. The Agents have not tested any apparatus, equipment, fittings or services and so cannot verify they are in working order. The buyer is advised to obtain verification. Please note all the measurement details are approximate and should not be relied upon as exact. All plans, floor plans and maps are for guidance purposes only and are not to scale. Under no circumstances should they be relied upon as exact or for use in planning carpets and other such fixtures, fittings or furnishings. YOUR HOME IS AT RISK IF YOU DO NOT KEEP UP REPAYMENTS ON A MORTGAGE OR OTHER LOAN SECURED ON IT. 'A Life Assurance policy may be requested.' 'Written Quotations of credit terms available on request.'

Banner Cross
 T: 0114 268 3241
 E: bannercross@saxtonmee.co.uk
www.saxtonmee.co.uk

Hathersage
 T: 01433 650009
 E: hathersage@saxtonmee.co.uk

Bakewell
 T: 01629 815307
 E: bakewell@saxtonmee.co.uk

Matlock
 T: 01629 828250
 E: matlock@saxtonmee.co.uk

